



C KELLY CHAIR

The Kelly Chair is an indoor sun lounger that enables maximum airflow and comfort for a tropical environment. Proportioned to enable two sitting styles, ideal for slouching.

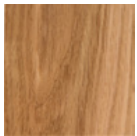
MATERIALS

Teak, Rattan, Stainless steel. Antique Brass or Black Nickel plating options. Oil or polyurethane finish

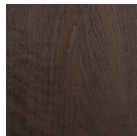


MATERIALS

Teak:



Natural



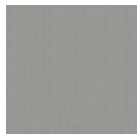
Lightly Smoked

Seat:

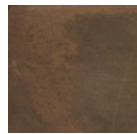


Rattan

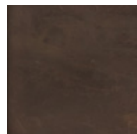
Legs:



Stainless Steel



Antiqued Brass



Black Nickel

DIMENSIONS

Width 1130mm

Depth 728mm

Height 818mm

