

# LEAF SCONCE

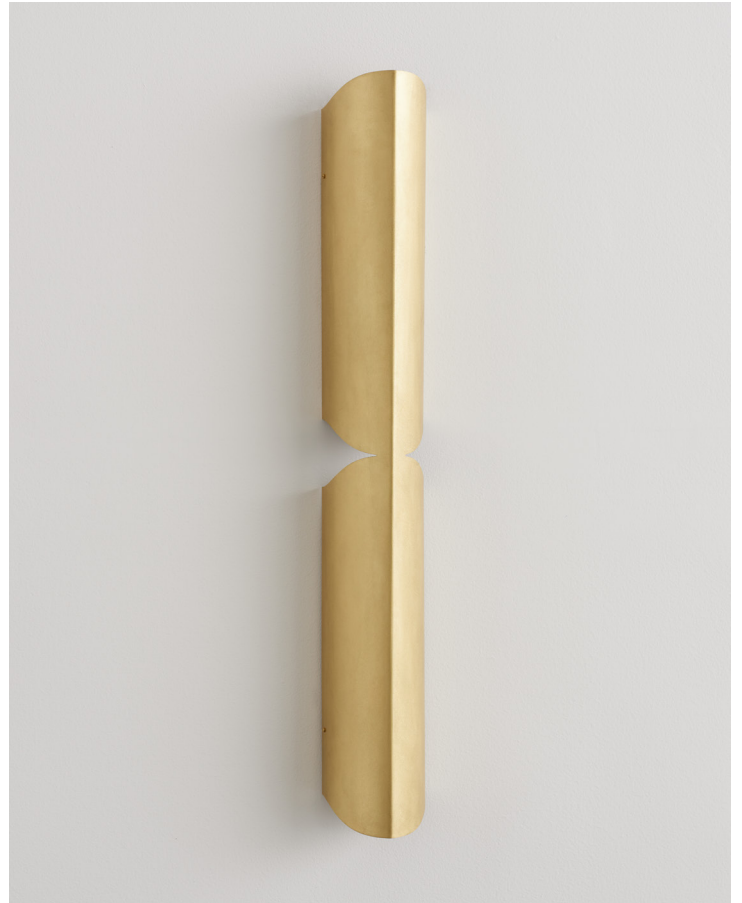
Reinterpreting the structure of heliconia leaves, the Leaf Sconce delivers an elegant, folded light shroud with an ambient glow.

The simplicity of the plant's leaf inspired an organic, vertical form – a single leaf to be extended upon like the system of a plant. Designed for residential and commercial use, The Leaf Sconce is IP rated for use in bathrooms, allowing for continuity between interior settings.

## MATERIALS

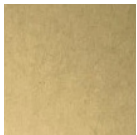
Brass - finished in matt brass, antique brass or black nickel. Custom finishes available.

Single or Double option.

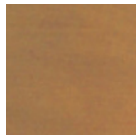


MATERIALS

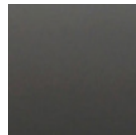
METAL



Brass



Antique Brass



Black Nickel

DIMENSIONS

Width	120mm
Depth	104mm
Height (single)	450mm
Height (double)	900mm

