



M

LOW COFFEE TABLE

Like its dining table counterpart, the M-Low Coffee Table was inspired by the El Castillo, in Mexico. Architectural elements from its pyramidal form have been fused into the table's design. The slender metallic mid-section lifts the floating top to express the duality of earth and sky.

Each part - the base, support and top - are distinct in form and material, a practice reminiscent of the simplified and streamlined works of sculptor Constantin Brâncuși. The 800mm diameter coffee table is the perfect accompaniment to your interior space.

NOTES

Our table tops are crafted from fine Italian marbles imported by premium local suppliers, complemented by a selection of timbers that have been wire brushed to a satin finish.

All our solid timbers and veneers are eco-certified and FSC® rated.

ELEMENTS

Marble or timber top, metal support and timber base.

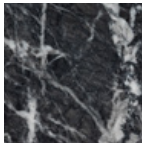


MATERIALS

Top Marble



Carrara

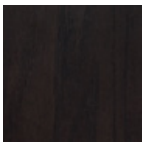


Grigio Carnico

Top Timber (American Oak)



Natural

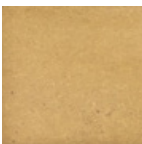


Smoked

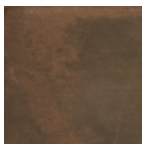


Limed

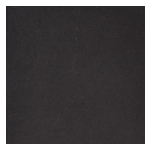
Metal Support



Brass

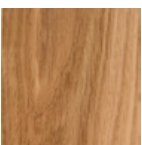


Antiqued Brass

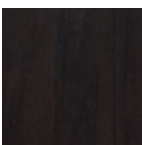


Black Nickel

Base (American Oak)



Natural



Smoked



Limed

DIMENSIONS

Width 800mm diameter
 Height 350mm
 Depth Base, 400mm

