



BUBBLE COFFEE TABLE

The top emerges from the base like a bubble taking flight, frozen in time. The juxtaposition of the rough with the smooth and heaviness with lightness, creates tension between the materials. Available in a range of colours and finishes.

MATERIALS

Rammed concrete mixed with natural pigments.
Colours: Sand, Sage, Ash, Charcoal.

Lacquered timber options include Maiko, Terracotta, Pale Tendril, Timeless Grey, Spanish Eyes, Bay Leaf, Olive Leaf.

Glass options include bronze and smoked grey.

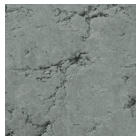


COLOURS

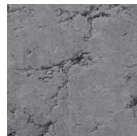
NATURAL PIGMENTS



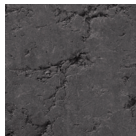
Sand



Sage

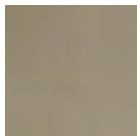


Ash



Charcoal

MOUTH-BLOWN GLASS



Bronze



Smoked Grey

LACQUERED TIMBER



Maiko



Terracotta



Pale Tendril



Timeless Grey



Spanish Eyes



Bay Leaf



Olive Leaf

DIMENSIONS

Diameter 500mm

Height 294mm

