



GEO ROUND TABLE

Like a tree, the timber tabletop is anchored to the earth, symbolising the natural cycle of life, death, and rebirth. The sedimentary legs are made from rammed concrete complemented by a range of timbers. Each piece is hand-made to order.

MATERIALS

Rammed concrete mixed with natural pigments.
Colours: Sand, Ash, Charcoal.

Timber options include limed oak, natural oak, smoked oak, black oak and American walnut.

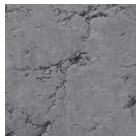


COLOURS

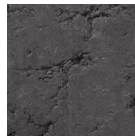
NATURAL PIGMENTS



Sand

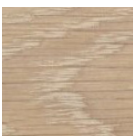


Ash

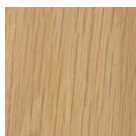


Charcoal

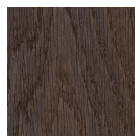
TIMBER



Limed Oak



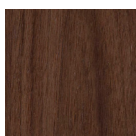
Natural Oak



Smoked Oak



Black Oak



American Walnut

DIMENSIONS

Diameter 1000-1200 and 1500mm

Height 730mm

This table can be customised to suit your requirements

