



# M SIDE TABLE

The M-Side Table developed from the same genesis as the M-Dining Table; both have been inspired by the pyramidal form of 'El Castillo,' in Mexico. They fuse its striking architectural elements into their design.

These delicately-strong tables come in three different pole heights, so they can work beautifully as a cluster or be perfectly tailored to your favourite sofa or chair.

## NOTES

Our table tops are crafted from fine Italian marbles imported by premium local suppliers, complemented by a selection of timbers that have been wire brushed to a satin finish.

All our solid timber and veneers are eco-certified and FSC® rated.

## ELEMENTS

Marble top, metal support, timber base and available in three different heights.

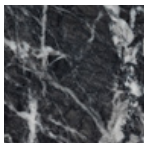


MATERIALS

Top Marble

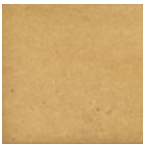


Carrara

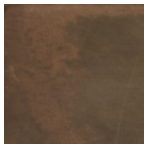


Grigio Carnico

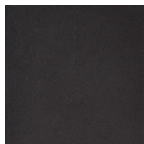
Support Metal



Brass

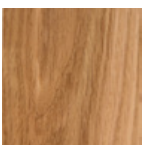


Antiqued Brass

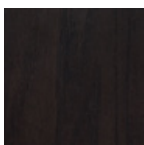


Black Nickel

Base (American Oak)



Natural



Smoked



Limed

DIMENSIONS

Width 440mm diameter

Height Available in 450, 500, 550mm

Depth Base, 300mm

